



Product Information

SD8-STEEL

CompactPCI[®] Serial • SATA Removable SSD

Document No. 6814 • 3 December 2013



SD8-STEEL

General

The SD8-STEEL is a peripheral slot card for CompactPCI® Serial systems. The SD8-STEEL is provided with a mobile rack, which accommodates a 2.5-inch size SATA drive, either SSD or HDD. Fast swap of the drive can be accomplished via the front panel. A push button unlocks a door and ejects the drive.

The SATA channel is derived from the CompactPCI® Serial backplane connector P1. For optimum signal integrity, the SD8-STEEL is equipped with 6Gbps SATA redrivers. As an alternate, the SD8-STEEL is also available as a carrier card for a fixed 2.5-inch drive (half-slim option), mounted directly to the PCB.

Feature Summary

- ▶ PICMG® CompactPCI® Serial Standard (CPCI-S.0)
- ▶ Peripheral Slot Card (up to 8 SATA Channels Specified on a CPCI-S Backplane)
- ▶ Mobile Rack Accommodates 2.5-Inch SATA Drive
- ▶ Fast Swap via Front Panel Door Slot
- ▶ Option Carrier Board for a PCB Mount 2.5-Inch SATA Drive
- ▶ Option Carrier Board for a PCB Mount 2.5-Inch SATA Half-Slim SSD
- ▶ Suitable e.g. for CompactPCI® Serial System Slot Controller SC1-ALLEGRO (CPU Board)
- ▶ Suitable e.g. for CompactPCI® PlusIO System Slot Controller PC1-GROOVE (CPU Board)
- ▶ CompactPCI® Serial Backplanes Available (Hybrid or Native)
- ▶ Rugged Solution (Coating/Sealing Available on Request)
- ▶ Long Term Available
- ▶ RoHS compliant

System Integration Options

The SD8-STEEL is a CompactPCI® Serial peripheral card. CompactPCI® Serial (CPCI-S.0) is a PICMG® standard for modular industrial computers, which provides high speed serial I/O (PCI Express®, SATA, USB, Gigabit Ethernet) over the backplane. The CPCI-S mechanical design is fully backward compatible to CompactPCI® Classic and will interoperate with existing systems, by means of a hybrid backplane.

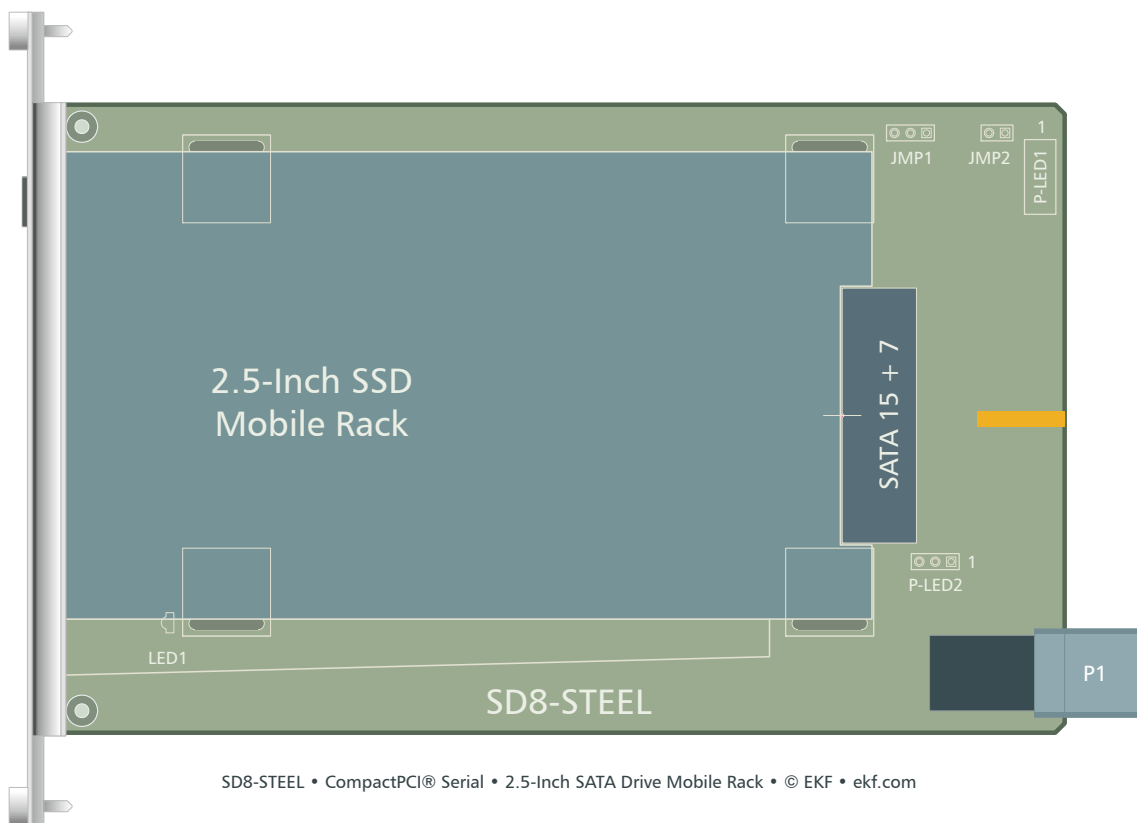
Hybrid systems (providing card slots for both CPCI Classic & CPCI Serial) can be configured by means of a CompactPCI® PlusIO CPU card such as the PC1-GROOVE or PC2-LIMBO in combination with a suitable hybrid backplane.

Native CompactPCI® Serial systems (up to 8 CPCI Serial peripheral card slots) can be built around a suitable system slot CPU board such as the SC1-ALLEGRO.

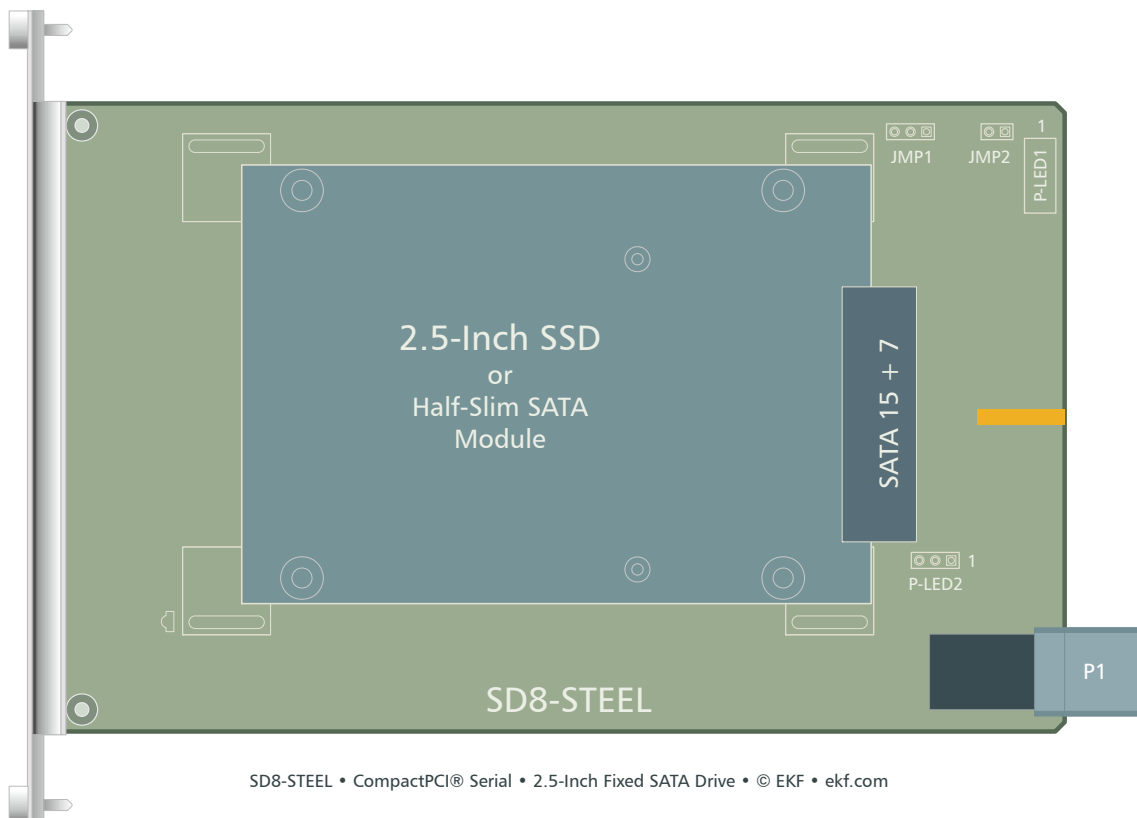


SD8-STEEL

Mobile Rack

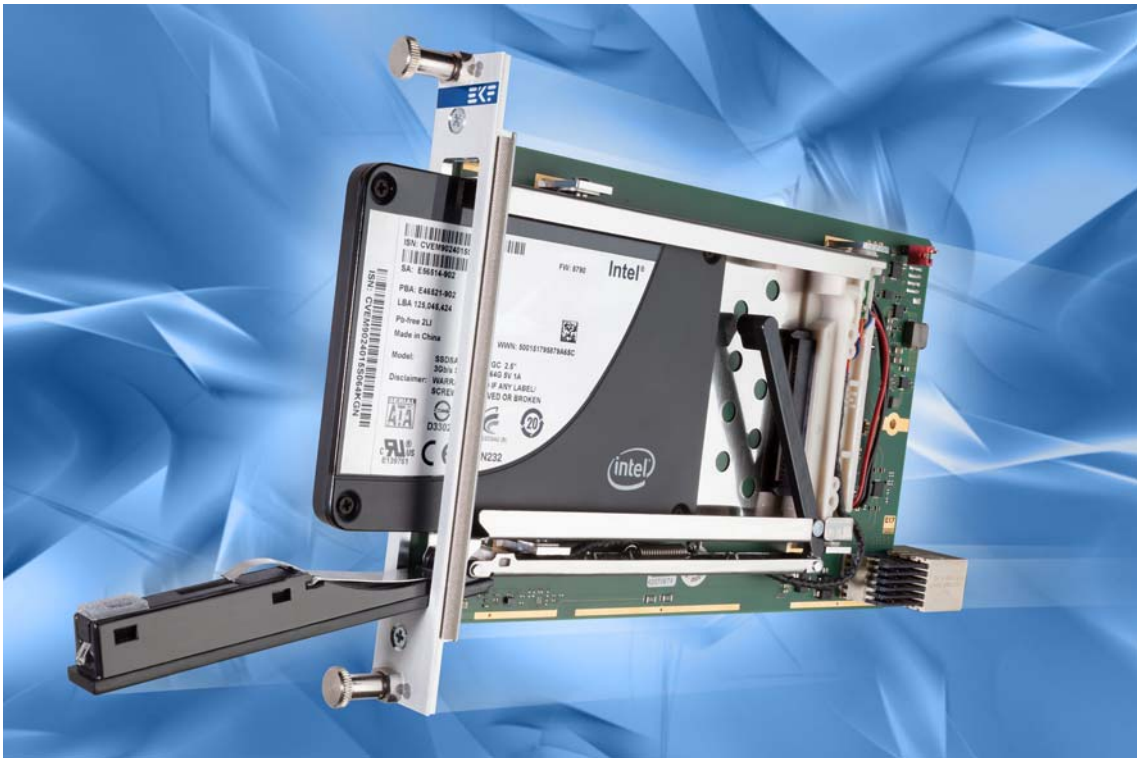


Option PCB Mount Drive



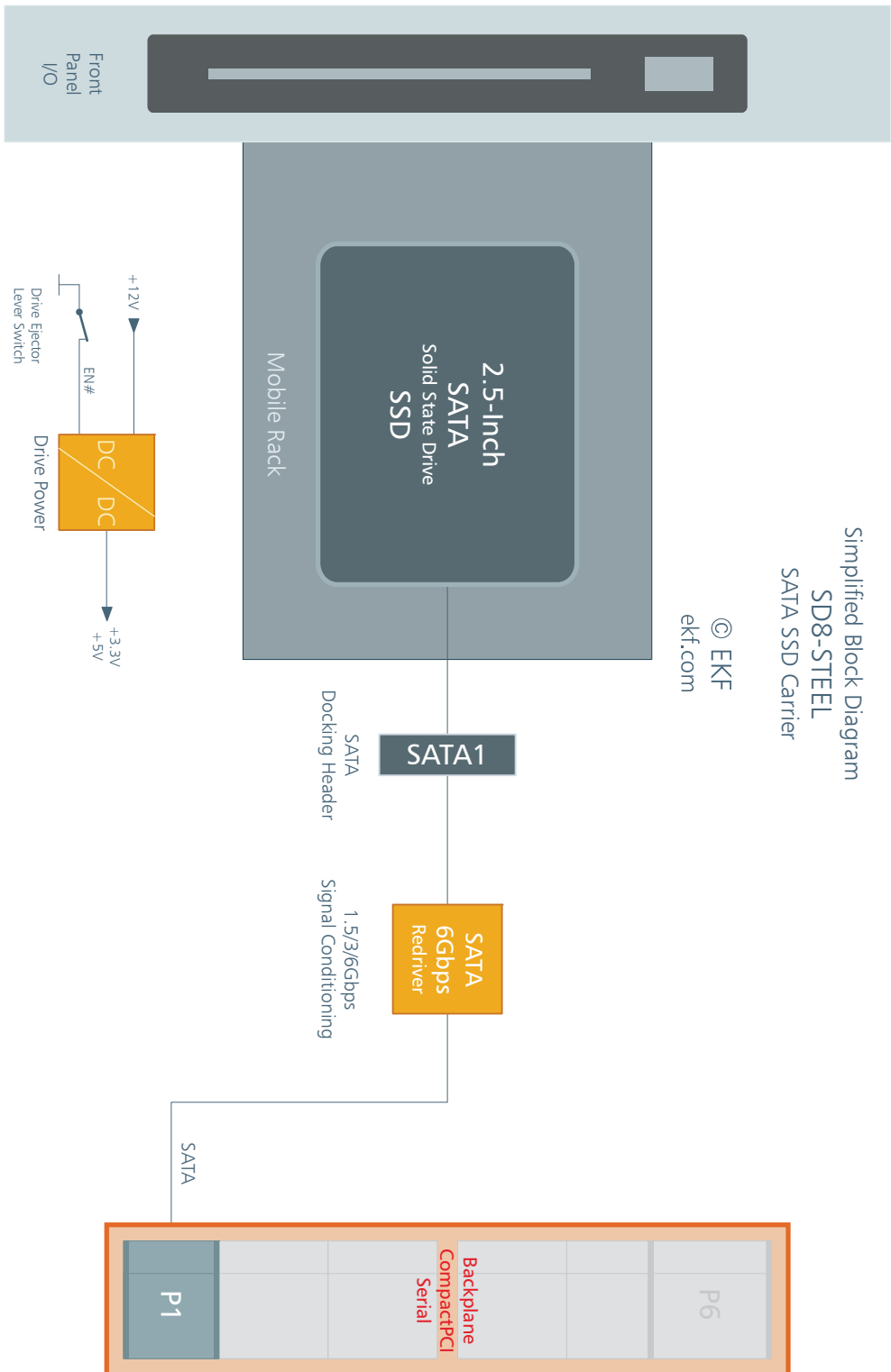


SD8-STEEL w. SSD

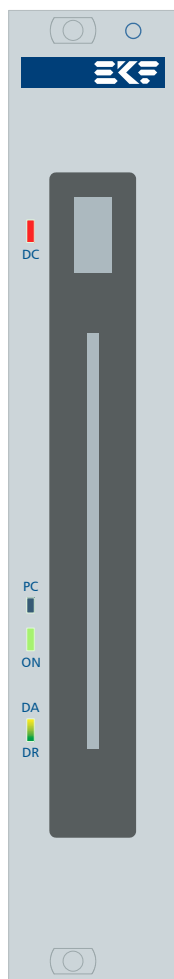


SD8-STEEL w. SSD

Block Diagram

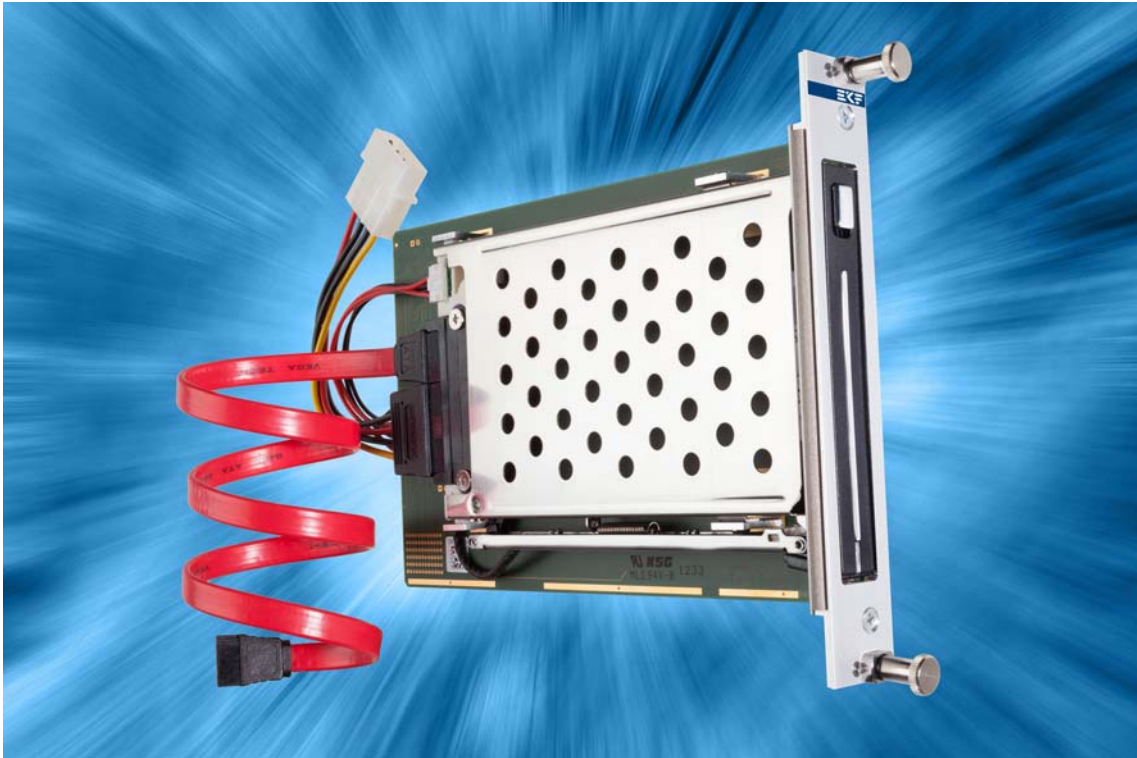


Front Panel (Mobile Rack)

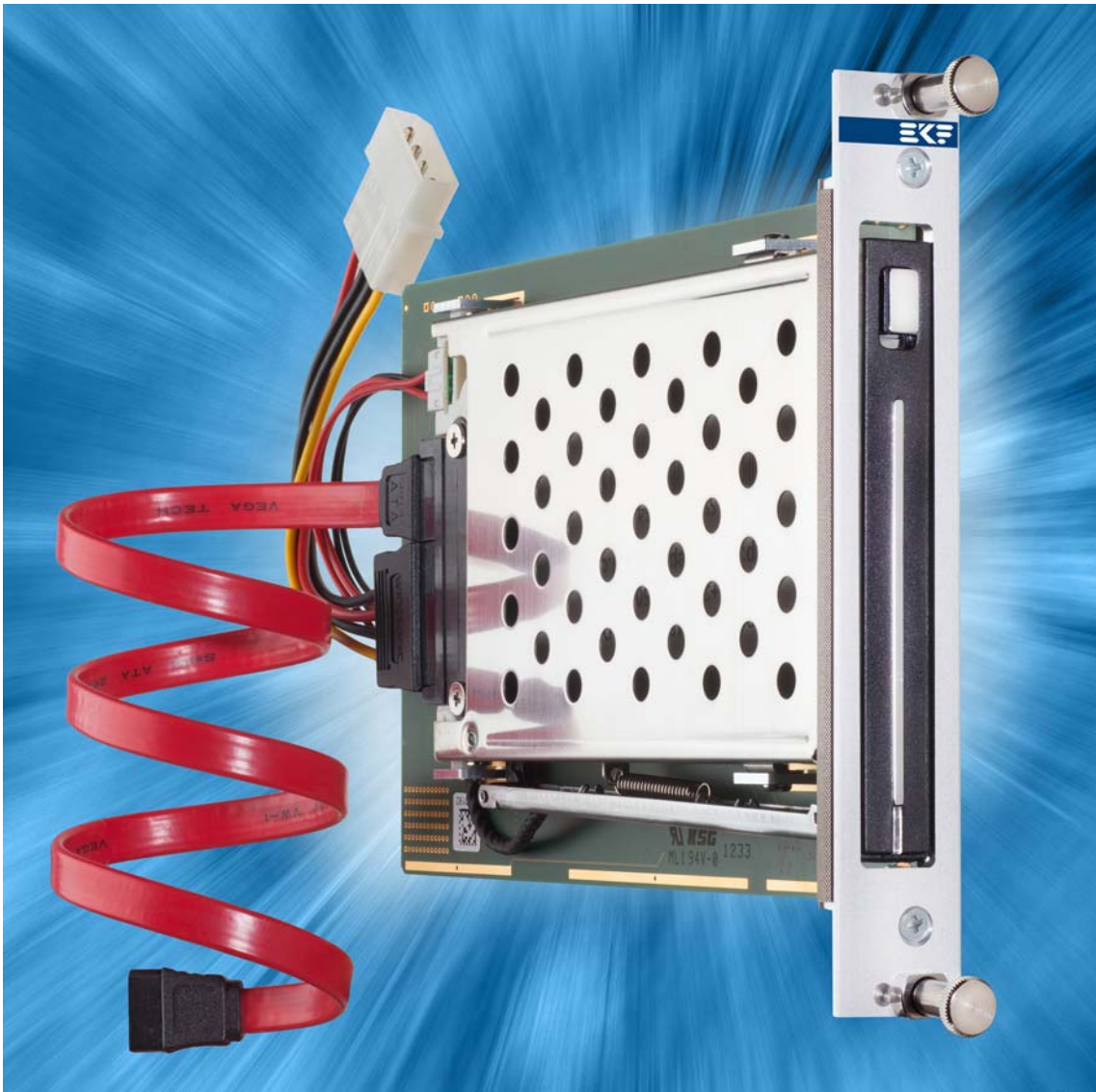


© EKF • draft - do not scale • ekf.com

SD8-STEEL



SD8-STEEL Assembly w/o Backplane Connector for System Internal Cabling



Ordering Information

For popular SD8-STEEL SKUs please refer to www.ekf.com/liste/liste_21.html#SD8

Related Documents CompactPCI® PlusIO & CompactPCI® Serial

| | |
|--------------------------------------|--|
| CompactPCI® PlusIO & Serial Overview | www.ekf.com/s/cpci_serial_overview.pdf |
| CompactPCI® PlusIO Home | www.ekf.com/p/plus.html |
| CompactPCI® Serial Home | www.ekf.com/s/serial.html |

Industrial Computers Made in Germany
boards. systems. solutions.

EKF Elektronik GmbH
Philipp-Reis-Str. 4
59065 HAMM
Germany



Phone +49 (0)2381/6890-0
Fax +49 (0)2381/6890-90
Internet www.ekf.com
E-Mail sales@ekf.com